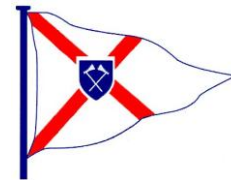


ST HELIER YACHT CLUB

SPRING SERIES 2010



Sponsored by

PRICEWATERHOUSECOOPERS 

Sunday 21st February 2010
Sunday 28th February 2010
Sunday 7th March 2010
& Sunday 21st March 2010

SAILING INSTRUCTIONS

Organising Authority: St Helier Yacht Club (SHYC), Jersey – www.shyc.je

1 RULES

- 1.1 The event will be governed by the Rules as defined in *The Racing Rules of Sailing 2009-2012*.
- 1.2 The Prescriptions of the Royal Yachting Association will apply.
- 1.3 The ISAF Offshore Special Regulations for Monohulls and Multihulls Category 4 will apply.
- 1.4 **Supplementary rules:**
 - 1.4.1 There shall be a minimum of 2 entries for each Class to constitute a valid series for that Class.
 - 1.4.2 A sole race competitor may start and optionally sail the course to qualify for appropriate series points.
- 1.5 **Racing rules will be changed as follows:**
 - 1.5.1 Rule A4.1 – A boat failing to start within 10 minutes of her starting signal will be scored Did Not Start (DNS).
 - 1.5.2 Rules 61.3 and 62.2 – The protest time limit shall be 90 minutes after the last boat in the relevant class has finished the last race of the day. The same protest time limit shall also apply to all protests by the race committee, and to all requests for redress.
 - 1.5.3 Rule 62.1 – Prior to the start of the race, boats should maintain watch on VHF Channel 8 for any communication from the race committee. Such communication may include a verbal countdown at the race committee's sole discretion. Non-reception of any message shall not provide grounds for redress against the race committee.

2 NOTICES TO COMPETITORS

Notices to competitors will be posted on the official notice board located at SHYC.

3 CHANGES TO SAILING INSTRUCTIONS

Any change to the sailing instructions or any change to the schedule of races will be posted by 18:00 local time on the day before it will take effect.

4 SIGNALS MADE ASHORE

Signals made ashore will be displayed at either the start line or the SHYC mast, as appropriate to the nature of the signal.

5 SCHEDULE OF RACES

5.1

Race	Date	Time of first warning signal	HW St. Helier
1	21 st February 2010	09:25 GMT	10:05 GMT 9.0m
2	28 th February 2010	15:55 GMT	18:32 GMT 11.2m
3	7 th March 2010	09:25 GMT	10:29 GMT 8.7m
4	21 st March 2010	08:55 GMT	09:12 GMT 9.7m

5.2 Note: These times are subject to change dependent upon shipping movements as notified by Port Control.

5.3 Classes may be started together or separately dependent upon the number of entries. Warning signals for each class will be indicated by the relevant class flags.

6 CLASS FLAGS

6.1 The Class flags will be as follows:

Class	Flag
Class 0 & 1	Code Flag K
Class 2	Code Flag U
Class 3	Code Flag R

6.2 All boats with a 2010 Jersey handicap are eligible to enter. The race committee reserves the right to amalgamate classes for this series dependent upon the number of entries. Competitors will be informed on the SHYC notice board by 18:00 GMT Friday 19th February 2010 which Class they will be racing in.

6.3 A competitor may participate in the series while awaiting the issue of a 2010 IRC handicap certificate or the issue of a 2010 Jersey handicap, and provisional results will be announced based upon the boat's 2009 Jersey Handicap. A 2010 handicap must be received before the start of the final race of the series, at which time the 2010 handicap will be applied retrospectively to the results of the series. In the event that a revised certificate is not received by the start of the final race, a provisional 2010 handicap will be issued by the Jersey Handicap Committee which will be valid for and applied retrospectively to this series.

7 RACING AREA

7.1 The racing area shall be St Aubins Bay.

8 THE COURSES

- 8.1 Courses may be started either at the St Helier YC start line or in St Aubin's Bay.
- 8.2 For races started on the St Helier YC start line in the approaches to St Helier Harbour, courses shall be as described on the joint Clubs' St Aubin's Bay Course Card 2005 and signalled on the mast adjacent to the St Helier YC start hut at the eastern end of the start line.
- 8.3 For races starting in St Aubin's Bay, courses will be set using a combination of numbered fixed marks as indicated on the joint Clubs' St Aubin's Bay Course Card 2005 plus two additional numbered fixed marks as shown in Appendix A.
- 8.4 For races starting in St Aubin's Bay, the numbers or letters of the fixed marks and the additional fixed marks will be displayed on a "hymn board" attached to a race committee boat, to be read from left to right.
- 8.5 The background colour of a number on the board will indicate the side on which the relevant mark is to be rounded or passed; green means round or pass the indicated mark to starboard; red means round or pass the indicated mark to port.

9 MARKS

- 9.1 The fixed marks and their number are shown on the St Aubin's Bay Course Card.
- 9.2 For races started in St Aubin's Bay the starting marks will be the race committee boat at the starboard end and a fixed mark or laid inflatable yellow pyramid buoy at the port end.
- 9.3 Two additional fixed marks are numbered as follows: -
Mark 0 – North Mark (approx position 49° 11.01' N and 02° 08.81' W).
Mark 15 – Southpier Marine mark - a yellow pillar buoy situated close northwest of the Demie des Pas lighthouse (approx position 49° 09.10' N 02° 06.30' W).
- 9.4 The numbers of the fixed marks and additional fixed marks are shown in Appendix A.
- 9.5 An inflatable yellow pyramid buoy may be stationed in the approximate position of any mark that is missing or significantly off station.

10 THE START

- 10.1 Races may be started on the St Helier YC line in the approaches to St Helier Harbour in accordance with SI 10.3. The use of this starting line will be signalled by displaying the SHYC burgee and ensign on the signal mast adjacent to the start hut at the eastern end of the start line generally no less than 30 minutes before the scheduled start time.
- 10.2 Where the St Helier YC line is used, the starting line will be an imaginary line drawn through the middle of the 2 conspicuous red triangles located at the start hut on the rubble jetty enclosing the La Collette yacht-basin, marking the eastern end of the line. A yellow buoy (mark 'L' on the course card) marks the outer limit of the start line but does not form part of the starting line transit.
- 10.3 Races will be started as specified in Rule 26 with the warning signal given 5 minutes before the starting signal.
- 10.4 Races started in St Aubin's Bay will be in accordance with SI. 10.3.
- 10.5 The starting line will be between a mast or staff displaying an orange flag of the race committee boat at the starboard end and the outer limit mark at the port end.
- 10.6 Where an inner limit mark is laid, boats shall not pass between that mark and the race committee boat at any time. An inner limit mark will not form part of the starting line transit.
- 10.7 A boat starting later than 10 minutes after her starting signal will be scored Did Not Start (DNS). This changes rule A 4.1.
- 10.8 Boats whose warning signal has not been made shall keep well clear of boats that are starting.

11 THE FINISH

- 11.1 The finishing line for each race will be the SHYC line located off and to the west of the La Collette Marina jetty in the Small Roads to St Helier Harbour, crossed from south to north. The line is defined by a transit formed by 2 conspicuous red/orange triangles located at the SHYC Start Hut on the rubble jetty, marking the eastern end of the line. A yellow buoy marks the outer limit of the starting line but does not form part of the line transit.

12 PENALTY SYSTEM

- 12.1 A boat that has taken a penalty or retired under Rule 31.2 or Rule 44.1 shall complete an acknowledgment form at the race office within the protest time limit.
- 12.2 As provided in Rule 67, the protest committee may, without a hearing, penalize a boat that has broken Rule 42.

13 PROTESTS AND REQUESTS FOR REDRESS

- 13.1 Protest forms are available from SHYC. Protests shall be delivered to SHYC within the protest time limit.
- 13.2 The protest time limit shall be 90 minutes after the last boat in the relevant Class has finished the last race of the day. The same time limits apply to protests by the race committee and protest committee about incidents they observe in the racing area, and to requests for redress. This changes Rules 61.3 and 62.2.
- 13.3 Notices will be posted within 30 minutes of the protest time limit, to inform competitors of hearings in which they are parties or named as witnesses. Hearings will be held at SHYC at a time to be advised.
- 13.4 Notices of protests by the race committee or protest committee will be posted to inform boats under Rule 61.1(b).
- 13.5 A list of boats that have acknowledged breaking Rule 42 or have been disqualified by the protest committee will be posted before the protest time limit.
- 13.6 Decisions of the protest committee will be final as provided in Rule 70.4.

14 SCORING

- 14.1 The Low Point scoring system of Appendix A to *The Racing Rules of Sailing 2009-2012* will apply.
- 14.2 A minimum of two races are required to be held to constitute the series.
- 14.3 A boat must start in at least two races to be counted in the series.
- 14.4 For all competing boats, the boat's series score will be the total of her best three race scores, except that when fewer than 3 races have been completed a boat's series score shall be the total of her race scores.

15 SAFETY REGULATIONS

- 15.1 Prior to the start, competing boats should, and the race committee will, maintain a listening watch on VHF Channel 8.
- 15.2 All boats should close with the starters before racing, for identification purposes.
- 15.3 Boats should maintain watch on VHF Channel 16 whilst racing.
- 15.4 When in small roads and shipping channels such as those constituting the approaches to St Helier, boats racing may interpret Rule 42.3(f) to permit the use of engine or other power where the boat constitutes a hazard to approaching commercial vessels and conditions are such that she cannot give proper way under sail. A boat taking this course of action shall then return to a point of no advantage. Under these conditions, the International Regulations for the Prevention of Collisions at Sea shall prevail. Such use of engine power shall be declared to the race committee, detailing the exact circumstances, times, and actions taken, on the attached declaration.
- 15.5 A boat that retires from the race shall notify the race committee, or another competitor, as soon as possible.

16 EQUIPMENT AND MEASUREMENT CHECKS

Any boat or equipment may be inspected at any time for compliance with the class rules and sailing instructions.

17 RADIO COMMUNICATION

A boat shall neither make radio transmissions while racing nor receive radio communications not available to all boats. This restriction also applies to mobile telephones and similar handheld devices.

18 PRIZES

- 18.1 Place prizes will be awarded for each Class as follows: -
 - 2 entries - first prize
 - 3 entries – first and second prizes
- 18.2 Trophies and prizes will be presented at the Prize giving on Sunday 21st March 2010.

19 DISCLAIMER OF LIABILITY

- 19.1 The attention of competitors is drawn to RRS Part 1 Fundamental Rules, and ORC Special Regulations Section 1 – Fundamental Regulations – 1.02 “Owners Responsibility” (the “regulations”).
- 19.2 Competitors participate in the event entirely at their own risk. See Rule 4, Decision to Race.
- 19.3 Neither SHYC, the sponsor, the race committee, or any of their members, employees, servants or agents shall be liable for any loss, damage, death or personal injury, howsoever caused, to any yacht, competitor, skipper or crew as a result of their taking part in the race.
- 19.4 Every skipper warrants the suitability of his/her yacht for the race.
- 19.5 The safety of a yacht and her crew, and her entire management, shall be the sole and inescapable responsibility of the skipper/person in charge, who shall do his/her utmost to ensure that the yacht is fully found, thoroughly seaworthy, and manned by an experienced crew, sufficient in number, who are physically fit to face any conditions that may arise during the race. The skipper/person in charge must be satisfied as to the soundness of hull, spars, rigging, sails and all gear, and must ensure that all safety equipment is properly maintained, stowed and in date and that the crew are fully briefed in its location and use.
- 19.6 Neither the establishment of these regulations, nor their use by the Organising Authority, nor any inspection of the yacht under these regulations shall in any way limit or reduce the complete and unlimited responsibility of the owner/skipper.
- 19.7 All crew are nonetheless advised to satisfy themselves as to the experience of the skipper and other crew and the adequacy of all safety equipment and insurance arrangements.

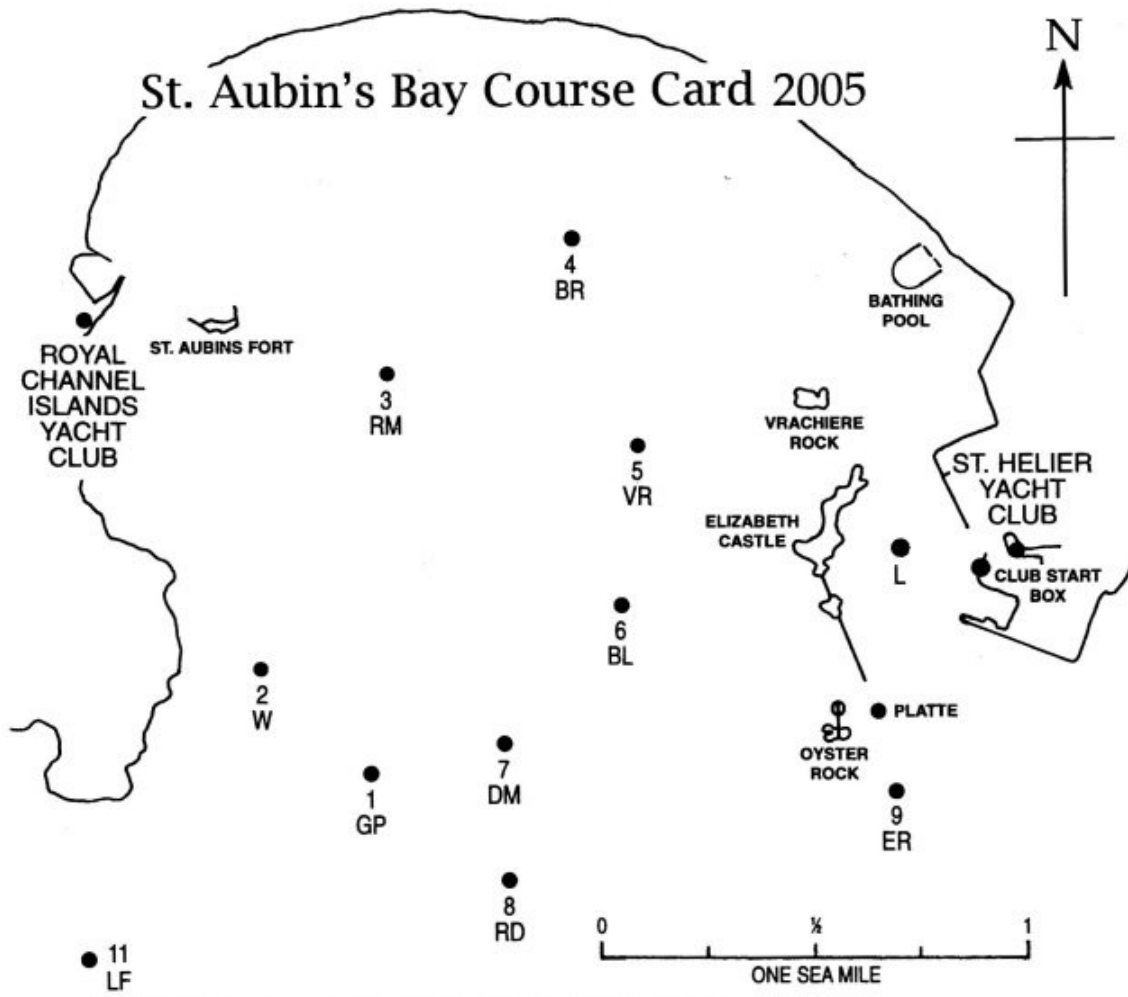
20 INSURANCE

- 20.1 Each participating boat shall, for the duration of the race, have in force a valid third-party liability insurance cover, including racing, to a minimum of £2,000,000.

APPENDIX A

Royal Channel Islands
Yacht Club

St. Helier Yacht
Club



WARNING
Care should be taken to avoid the OYSTER ROCK situated S.W. of the Platte Beacon approx one cable distance

BUOYS, ETC., LISTED BELOW HAVE BEEN ALLOTTED THE FOLLOWING LETTERS & NUMBERS

GRUNES DU PORT BUOY.....	1 GP	DIAMOND BUOY.....	7 DM
WEST MARK.....	2 W	RAUDIERE BUOY.....	8 RD
ST. AUBIN'S RACING MARK	3 RM	EAST ROCK BUOY.....	9 ER
BEACH ROCK BUOY.....	4 BR	HINGUETTE BUOY.....	10 HG
VRACHIERE BUOY.....	5 VR	LES FOURS BUOY.....	11 LF
BALEINE MARK.....	6 BL	LIMIT BUOY	L

PARTICIPATING YACHTS SHALL NOT MAKE USE OF THE DEEP WATER CHANNELS IN SUCH A WAY AS TO CAUSE OBSTRUCTION TO LARGE VESSELS USING THE PORT.

Additional Marks as specified in Sailing Instructions 8.3, and 9.4:

SI No	MARK	MARK ID
8.3 &	North Mark (approx position 49° 11.01' N and 02° 08.81' W)	0
9.4	Southpier Marine mark - a yellow pillar buoy situated close northwest of the Demie de Pas lighthouse (approx position 49° 09.10'N 02° 06.30'W)	15